



LOCAL DEVELOPMENT FRAMEWORK SUPPLEMENTARY PLANNING GUIDANCE
LEVEL PLANNING GUIDANCE
SITE AUDITS SUPPLY AND DEMAND ANALYSIS **TAN16** LOCAL DEVELOPMENT FRAMEWORK SUPPLEMENTARY PLANNING GUIDANCE
CONSULTATION PPG17 SUPPLEMENTARY PLANNING GUIDANCE
STANDARDS SPP11 LOCAL DEVELOPMENT FRAMEWORK SUPPLEMENTARY PLANNING GUIDANCE
COMMUNITY CONSULTATION **PLAY STRATEGIES** SITE AUDITS SUPPLY AND DEMAND ANALYSIS
LOCALLY DERIVED STANDARDS SUPPLEMENTARY PLANNING GUIDANCE
ASSESSMENTS **PPG17** COMMUNITY CONSULTATION AND ANALYSIS OPEN SPACE STUDIES GIS MAPPING LOCAL DEVELOPMENT FRAMEWORK SUPPLEMENTARY PLANNING GUIDANCE
INDOOR SPORTS ASSESSMENTS COMMUNITY CONSULTATION AND ANALYSIS
LOCALLY DERIVED STANDARDS SPP11 LOCAL DEVELOPMENT FRAMEWORK SUPPLEMENTARY PLANNING GUIDANCE
CONSULTATION SITE AUDITS SUPPLY AND DEMAND ANALYSIS **PLAYING PITCH STRATEGIES** STANDARDS
FRAMEWORK SUPPLEMENTARY PLANNING GUIDANCE
ASSESSMENTS COMMUNITY CONSULTATION AND ANALYSIS **OPEN SPACE STUDIES** GIS MAPPING LOCAL DEVELOPMENT FRAMEWORK SUPPLEMENTARY PLANNING GUIDANCE
ASSESSMENTS COMMUNITY CONSULTATION AND ANALYSIS **SPP11** LOCAL DEVELOPMENT FRAMEWORK SUPPLEMENTARY PLANNING GUIDANCE
CONSULTATION AND ANALYSIS GIS MAPPING LOCAL DEVELOPMENT FRAMEWORK SUPPLEMENTARY PLANNING GUIDANCE
GREEN FLAG LOCAL DEVELOPMENT FRAMEWORK SUPPLEMENTARY PLANNING GUIDANCE
AND DEMAND ANALYSIS LOCAL DEVELOPMENT FRAMEWORK SUPPLEMENTARY PLANNING GUIDANCE
ASSESSMENTS

Open Space & Facilities Planning

KKP provides clear, thorough, in-depth guidance on the protection and enhancement of open spaces, playing pitches, indoor and outdoor sports and play facilities.

Our combination of strategic and operational understanding places us at the forefront of land use planning in the UK. Having completed a wide variety of PPG17, SPP11 and TAN16 related studies; we bring up to the minute, specific, practical knowledge and a strong, integrated balance of professional skills, experience and qualifications.

Our assessments and strategies are of a higher standard and are based on the most comprehensive, detailed evidence base within the sector. The emphasis placed on face-to-face consultation means that future direction is based on solid foundation.

Open spaces

PPG17 has brought new challenges to local authority's planning policies; emphasising locally derived standards to protect and enhance the local environment. We deliver studies for local authorities, national parks and private property developers. This balanced experience places us in the vanguard of contemporary challenges.

Having an excellent in-house field research team gives us a capacity unmatched in the sector. It enables us to manage large, complex assignments and conduct, on average, 3,000 site assessments each year, against sophisticated criteria developed from Green Flag principles - thus providing added value.

Play

The national commitment to play confirms the need to move away from the "two swings and a slide" mentality. We work with agencies up and down the country, from Sunderland to St Ives, developing strategies for play and adventure provision, and consulting and engaging with children, young people and the agencies that work with them.

From natural play through play rangers to urban games, our expertise in developing plans that build capacity and deliver stimulating, attractive activities and facilities is evidenced by our 100% record on funding applications.

Pitch and non-pitch sports facilities

We have delivered playing pitch strategies for more than 20 clients over the last three years; from Bournemouth and Bridgend to North Lanarkshire.

In the present context of BSF in England and comparable programmes in Scotland and Wales, all local authorities need an accurate, up to date playing pitch strategy. By integrating the 'Towards a Level Playing Field' toolkit into our bespoke databases, we add value and enhance the levels of analysis conducted.

Indoor and built facilities

We start with ensuring accurate data, then use Active Places Power/Plus to support

our supply and demand analysis and demographic profiling. It is used to inform BSF planning and decisions on whether facilities should be rationalised, replaced or improved.

All our work meets the statutory requirements of LDFs and provides the robust evidence base needed to produce supplementary planning documents. Local authorities across the UK have commissioned our practical but challenging assessments and strategies, securing many millions of pounds in developer contributions for new and improved facilities.

"The (Salford) report is a good example of a comprehensive assessment of playing fields... we endorse this document."
Sport England

"KKP has done a really good job producing sound evidence with reasoned logic. We look forward to working with them to animate the facilities strategy so that everyone has a clear vision of what the future could look like."
Alison Baker, Manager of Sport, Bath and North East Somerset Council

"KKP's work clearly informed our Open Space SPD that has recently received a Strategic Planning Award from Sport England. This would not have been possible without KKP's technical and forensic procedures."
Pam Smithies, Systems and Information Officer, Calderdale Council

Integrity, Innovation, Inspiration

1-2 Frecheville Court ◀ off Knowsley Street ◀ Bury BL9 0UF

T 0161 764 7040 ◀ **F** 0161 764 7490 ◀ **E** mail@kkp.co.uk ◀ **www.kkp.co.uk**



KKP: THE CUTTING EDGE

KKP has core expertise in strategic planning. We deliver large, complex, multi-disciplinary assignments of differing scales in all environments. We are particularly strong in the delivery of PPG17 assessments including the review and updating of previous studies, demonstrating a clear point of difference:

The most comprehensive evidence base within the sector

We are known to provide full PPG17 open space, facility and playing pitch assessments and strategies of a higher standard than our counterparts. These are based on what independent commentators have confirmed is the most comprehensive, detailed evidence base within the sector. The emphasis we place on face-to-face consultation means that policy direction we propose is based on rock solid foundations.

Working closely with the client, we ensure that no stone is left unturned: consulting with people from all sections of the local community to ensure that **all** locally valuable provision is identified and audited.

Our dedicated, in-house field research team gives us excellent site auditing capacity unmatched in the sector. We manage large, complex assignments and have, since 2005, conducted, on average, 3,000+ site assessments each year, against sophisticated criteria developed from Green Flag principles - thus providing added value.

Sport England's Facilities Improvement Service (FIS) Lead Adviser recently commended KKP for its approach and outcomes:

"Having reviewed a number of KKP's documents, it is my view that their use of strategic planning tools, analysis and interpretation and adherence to PPG17 guidance is exemplary, providing clients with thorough and comprehensive working documents. KKP is raising the bar and councils should expect this level of diligence and attention to detail when commissioning this type of work."

Robustness and defensibility

We are completely familiar with the requirements of the LDF/Core Strategy process and we, thus provide robust, reliable data which can withstand the scrutiny of the planning process and is suitable to underpin defensible recommendations and provision standards.

"The (Salford) report is a good example of a comprehensive assessment of playing fields ...we endorse the document" (Sport England)

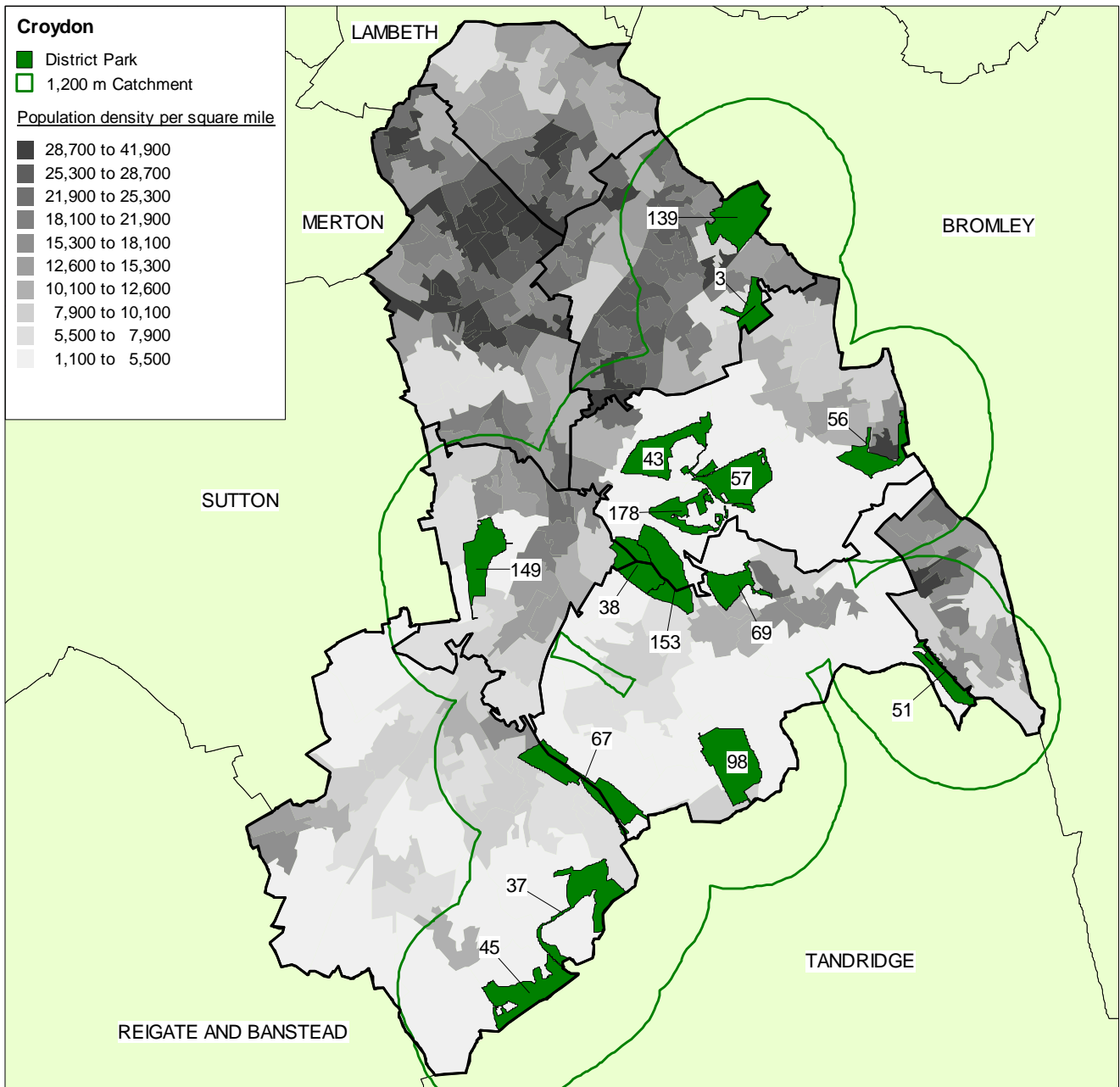
We have, both for local authorities and developers, taken the stand at hearings to address development policy and developer contributions. Examples include our work for Sefton MBC in connection with its objection to development of the Hugh Baird College Playing Fields in Bootle and our work for GVA Grimley and Persimmon Homes on proposals for new and improved sports facilities at the Portland Pavilion Sports & Social Club.

Technical expertise

Our technical experts are recognised leading industry specialists in this field. They analyse raw data in a variety of forms to get the most from information gathered. Their work is displayed via the most sophisticated geographic information systems (GIS) in the sector. We use industry leading software, Mapinfo, to provide pictorial maps to enhance interpretation and understanding of responses and data.

For example, using our catchment mapping, we model comparisons of walk time and drive time as standard practice to inform the setting of provision standards to identify surpluses and deficiencies.

Catchment (walk time) mapping set against population density backdrop: London Borough of Croydon:



As standard, we provide the client with completed databases in paper and electronic format and along with training and guidance to enable client staff to maintain and update records. Adopting a common key for records and databases also ensures that we can perform analysis at any level of defined geographic definition.

Staying abreast of technological advances, we have developed a linked PDA/GIS system. We use handheld PDAs to review open space, sport and recreation facilities and to download results in Access or Excel formats. This ensures that we optimise both environmental benefits and the accuracy with which detail is gathered and recorded (paper forms are not required). By linking the PDA and the site assessment database, you have the capacity to continually and efficiently update your own information.

Planning expertise

Our work is used to underpin production of LDFs and supplementary planning documents. As noted above, our expertise is honed by experience of both sides of the process, working for developers and local authorities. This allow councils to secure developer contributions to improve existing, and provide new, provision; an issue that has been brought into sharper focus by the recent economic downturn;

As an example, we have provided PPG17 support for all local authority areas in West Yorkshire - from an assessment of sports facilities in Leeds on behalf of GVA Grimley and Leeds Grammar School to full open space, sport and recreation studies for Kirklees, Bradford and Calderdale councils; the latter recently received a Strategic Planning Award from Sport England as a result of its Open Space SPD.

“KKP’s work clearly informed our Open Space SPD that has recently received a Strategic Planning Award from Sport England. This would not have been possible without KKP’s technical and forensic procedures.” Pam Smithies, Systems and Information Officer, Calderdale Council.

PPG17 is a challenge for planning policy for open spaces, moving away from formulaic and increasingly irrelevant generic standards. We strongly endorse the emphasis on locally derived standards to protect and enhance the local environment. Our work places local authorities in a stronger position to influence the sale and re-development of land for the benefit of local residents and signifies the growing recognition of the value of this new way of shaping local communities.

Where appropriate, to ensure ‘due diligence’ on planning issues, associate planning consultants, Cass Associates, scrutinise and add value our work. Their input and the recent addition of a qualified planner with direct, recent regional spatial planning experience to our in-house team ensures an excellent planning policy and expertise base for all our work in this field.

Positive outcomes

Many local authorities are now realising the benefits of our practical yet challenging PPG17 compliant assessments and strategies. These are used to secure extensive funds to improve facilities; for example:

- ◀ **South Somerset District Council** - secured several million pounds in developer contributions to improve sport and recreation facilities in Yeovil and surrounding areas on the back of our Facilities Assessment and Strategy.
- ◀ **South Lakeland District Council** – for which we developed local standards to increase the scope for negotiation with developers and investment of contributions, in new and enhanced provision, recently gave the go-ahead for major repairs to four pitches at Jubilee Playing Fields in Kendal, at a cost of £100,000.
- ◀ **St Helens MBC** - in the year following completion of its playing pitch strategy, the Council secured £1 million from the New Opportunities Fund and Section 106 contributions to address priorities highlighted in the action plan we produced.
- ◀ **Birmingham City Council** – Following adoptions of our playing pitch strategy, six capital projects (valued at £4m) have been developed. Two thirds of this amount was sourced via external grant aid.
- ◀ **Kirklees Council** – as a result of our PPG17 work, the Council has secured funding and successfully delivered all the recommended major actions related to its play provision.

“KKP has, again, more than met our brief, producing a challenging but practical strategy that I am confident we shall be able to use to lever in additional investment required.”(Craig Horabin, Hyndburn Borough Council)

Repeat business

We successfully link outdoor sports assessments to wider open space studies and, following successful completion of initial assessments and strategies, we are regularly re-appointed to deliver complementary and associated assignments. Recent examples of this include:

- ◀ **North Lanarkshire Council** – having delivered a successful playing pitch strategy in 2006, we were then commissioned to deliver its open spaces strategy (2007), its sport and physical activity strategy (2008) and sports facilities strategy (2008).
- ◀ **Bath & North East Somerset Council** – In a longstanding working relationship with the Council, we recently delivered its playing pitch strategy and PPG17 sport and recreation facilities assessment and strategy. We have, in a further commission, translated this into an animated vision (2009).
- ◀ **Salford City Council** – we recently completed our third iteration of its playing pitch strategy (1999, 2003, 2008), building on the findings of our previous studies and reflecting latest industry priorities. This is now being used to inform its BSF strategic planning - for which we are also providing support.
- ◀ **Bolton Council** – we delivered its first playing pitch strategy in 2004, followed this with a two stage feasibility study to create a £1m Community Club in Leverhulme Park (2006) and subsequently completed its open space assessment and strategy and new playing pitch strategy (2007). We are, again, currently working with Bolton on BSF led facility development plans.
- ◀ **Hyndburn Borough Council** – Following a successful initial audit/assessment of green spaces and outdoor sports facilities, we were commissioned to deliver its integrated Open Space Strategy, to generate evidence to support the LDF and to produce its associated Open Space SPD.
- ◀ **Bournemouth and Poole Councils** – In successive joint commissions from both local authorities, we delivered their (separate) PPG17 facilities assessments and strategies followed by playing pitch strategies for both to provide an evidence base for the BSF programme in both areas.
- ◀ **Bridgend County Borough Council** – in 2008, KKP worked with Bridgend on an assessment of accessible natural greenspace. This followed a sport and community facilities audit and strategy (2006), a subsequent management options appraisal (2007) and delivery of performance management and impact based market research over the period between 2004-2009.

Full list of PPG17 studies across all three main elements

Region	PPG17 compliant assignments	
London, East & South East	<ul style="list-style-type: none"> • Dacorum • Harlow • London Borough of Barnet • London Borough of Camden • London Borough of Croydon 	<ul style="list-style-type: none"> • London Borough of Ealing • Three Rivers • Watford • Southampton
South West	<ul style="list-style-type: none"> • Bath & North East Somerset • Bournemouth • Cornwall • Cheltenham • Poole 	<ul style="list-style-type: none"> • Plymouth • South Somerset • Somerset • Tewkesbury • Weymouth & Portland
North East	<ul style="list-style-type: none"> • Derwentside • North Tyneside 	<ul style="list-style-type: none"> • Sunderland • Teesdale
Yorkshire and the Humber	<ul style="list-style-type: none"> • Calderdale • Bradford • Craven • Doncaster 	<ul style="list-style-type: none"> • Kirklees • North East Lincolnshire • City of Wakefield • Leeds
North West	<ul style="list-style-type: none"> • Blackburn with Darwen • Blackpool • Bolton • Fylde • Hyndburn • Manchester • Oldham • Preston • Salford • Sefton 	<ul style="list-style-type: none"> • South Lakeland • The Lake District National Park • St Helens • Tameside • Trafford • Warrington • West Lancashire • Wigan • Wyre
East Midlands	<ul style="list-style-type: none"> • Amber Valley • Bassetlaw • East Lindsey • Newark & Sherwood • Nottinghamshire 	<ul style="list-style-type: none"> • High Peak • The Peak District National Park • Derbyshire Dales • Melton
West Midlands	<ul style="list-style-type: none"> • Birmingham • Malvern Hills • Newcastle-under-Lyme 	<ul style="list-style-type: none"> • Stafford • East Staffordshire • Staffordshire Moorlands
Scotland	<ul style="list-style-type: none"> • East Renfrewshire • North Lanarkshire 	<ul style="list-style-type: none"> • West Dunbartonshire
Wales	<ul style="list-style-type: none"> • Bridgend 	<ul style="list-style-type: none"> • Torfaen